

Swing nuts

SPECIFICATION

Steel

- Tensile strength class 5.8
- blackened

INFORMATION

In combination with grub screws i.e. DIN 913 or DIN 6379 (see page 937) and swing nuts GN 444.2 can be used together as swing bolts in varying lengths.

In addition, used with a cap screw DIN 912, a swivelling clamping screw can be produced.

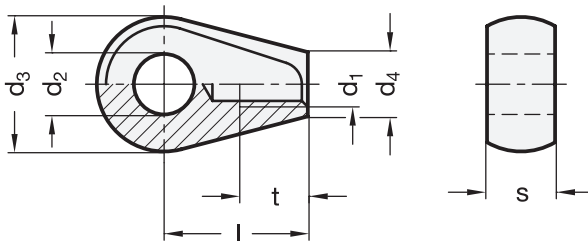
Dimensions d_2 , d_3 and s are identical to DIN 444 (see page 935).

For stocking purposes cylinder head shoulder bolts GN 732.1 (see page 919) can be used for the sizes M8, M10 and M12.

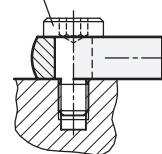


TECHNICAL INFORMATION

- ISO-Fundamental Tolerances (see page A21)
- Strength values of nuts (see page A20)



Cylinder head shoulder bolt GN 732.1 used as bearing pin



GN 444.2

Description	d_1	d_2 H7	d_3 -0.3	d_4	l	s -0.15	t min.	Δ
GN 444.2-M6-8	M 6	8	18	8.5	19	9	9	18
GN 444.2-M8-10	M 8	10	20	11	24	12	11	30
GN 444.2-M10-12	M 10	12	25	13.5	28	14	14	52
GN 444.2-M12-16	M 12	16	32	16	34	17	16	101